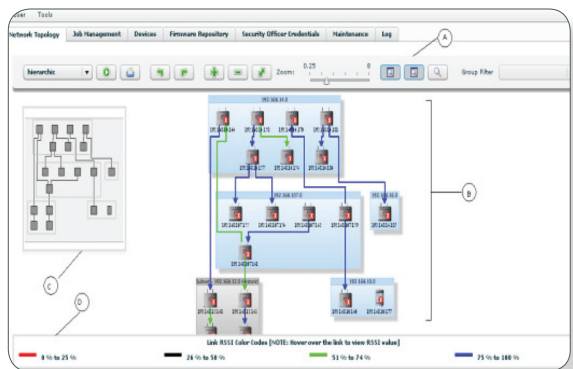


UltraView™ Management Appliance

3e-840 (Beta)



UltraView management appliance client interface

BENEFITS

- Simple installation with easy device provisioning and auto-detection
- Multi-level user access control
- Versatile job scheduling management tool
- Easy firmware storage and upgrade maintenance
- Simple browser platform for easy access and management
- Customizable views for device groupings and link status
- Manage devices such as access points (APs) remotely from a central location
- Continuous security monitoring using syslog alarm logs

Wireless networks have become fundamental to today's global communications processes, making the ability to expand network operations and manage assets from a central source critical to cost-effective network management. 3eTI's UltraView wireless LAN device management appliance is an innovative solution designed to easily integrate, deploy and manage all of your 3eTI wireless mesh network devices through a centralized web-based interface. From this single point of operation, UltraView helps reduce installation, operation and maintenance costs by consolidating the numerous tasks which naturally result from simultaneously managing multiple non-integrated networks.

Based on SNMP and HTTPS protocols, the UltraView appliance communicates securely with 3eTI individual devices, such as AirGuard® Wireless Data Point, AirGuard® PAC-link, VirtualFence™ and EnergyGuard™ solutions. Its straightforward browser interface allows Network Administrators to view the network topology, monitor clients, manage faults, generate historical reports and distribute software images to all or specific 3eTI mesh devices.

Device Monitoring

UltraView can automatically discover newly installed 3eTI devices and incorporate them into a comprehensive topology map so its view is always up to date. In addition, users have several options on how to display topology views, including grouping specific mesh devices based on selected criteria. The device view can be arranged in hierarchic, circular, random or orthogonal topology, so users can see the impact of each device and fine-tune its placement in the network for varying effect. An overview window provides a summary of deployment, while a zooming view allows for a detailed view of any part of the network. The links between devices are colored to represent different signal levels and individual device settings are easily accessible from the web interface.

Key Distribution

UltraView is capable of sending new keys to selected devices. The key distribution can be scheduled per the user's request.

Transmit Control

Radio frequency (RF) transmissions from wireless devices must be eliminated during certain scenarios, such as during weapons testing or fueling. UltraView can control when power is transmitted, allowing RF transmissions to be turned off when required.

PROVISION AND CONFIGURATION

The SNMP-based configuration capability allows Network Administrators to configure chosen parameters for each device. These parameters include transmit power, user admission rights, IP addresses and much more. In addition, security alarms registered by each individual device's syslog events can be easily retrieved from the web interface, ensuring administrators can preserve a degree of security in the case of a breach.

FIRMWARE MANAGEMENT

Multiple versions of firmware can be stored in the appliance, simplifying storage and minimizing upgrade maintenance. A firmware repository screen in the web interface provides an easy view of firmware versions that are loaded into different devices so users have a clear view of the network software history as well as upgrades.

JOB SCHEDULING

The job management screen allows for easy job scheduling and traditional planned network maintenance activities. Certain scheduled tasks such as wireless security key maintenance, VLAN security, bridge security, TX on/off and firmware upgrades can be planned in advance to relieve the burden of last-minute IT management tasks.

MULTI-LEVEL USER CREDENTIAL

Different levels of user credentials can be set to allow partial access to the tool, giving the Network Administrator the ability to provide varying degrees of access to different levels of users. This streamlines related Administrative tasks, allowing the Network Administrator to make wholesale updates or modifications per user group.



UltraView management appliance 1U rack mount server

PRODUCT SPECIFICATIONS:

FEATURES

- Secure Web management / HTTPS
- SNMP v1/v2c/v3

INTERFACES

- 1 x RJ-45 LAN Jack
- 4 x Rear USB 2.0 Ports
- 1 x VGA Port
- 1 x PS/2 Mouse Port
- 1 x PS/2 Keyboard Port
- 10/100 Mbps Fast Ethernet LAN, PXE Boot Agent Compatible

MECHANICAL ATTRIBUTES

- 14" (D) (half depth) Mini Rack Mountable Case
- 1 Rack Unit Height (1U/1.7")
- Dimensions: 14" (D) x 19" (W) x 1.7" (H)
- Wall mounting bracket and screws are included. Sliding Rails Kit is Optional (not included).

ENVIRONMENTAL

- Operating Temperature: 10° to 35° C (50° to 95° F)
- Storage Temperature: -40° to 70° C (-40° to 158° F)
- Operating Relative Humidity: 8% to 90% (non-condensing)
- Non-operating Relative Humidity: 5 to 95% (non-condensing)

POWER REQUIREMENTS AND ACOUSTIC NOISE EMISSION

- AC Voltage: 100 - 240V, 50-60Hz, 1.5 Amp Nominal, 3.0 Amp Max
- 85W to 135 W with standard configuration
- Noise level (during normal operation): ~59 dBA (ISO 7779 operator position, 0.6 meter)

CONTACT US

If you would like more information on the UltraView management appliance go to http://www.ultra-3eti.com/contact_us/ to submit an inquiry or call sales at (800) 449-3eTI.

Ultra
ELECTRONICS

3eTI

Ultra Electronics

3e Technologies International (3eTI)
9715 Key West Avenue, Suite 500
Rockville, MD 20850
(800) 449-3384
sales@3eTI.com
www.ultra-3eTI.com
www.ultra-electronics.com